



# **Review of Management Bulletins**

---

**2017 Joint Conference of California Child Care  
California Alternative Payment Program Association and  
Resource and Referral Network**

**Presented by  
Karmina Barrales and Becky Halligan,  
California Department of Education,  
Early Education and Support Division**



**TOM TORLAKSON**  
State Superintendent  
of Public Instruction

# Objectives

- Highlight of Management Bulletins (MB) released to date in response to the Budget Act of 2017
- Accessing the Early Education and Support Division's MBs

<https://www.cde.ca.gov/sp/cd/ci/allmbs.asp>



**TOM TORLAKSON**  
State Superintendent  
of Public Instruction

# Released Management Bulletins

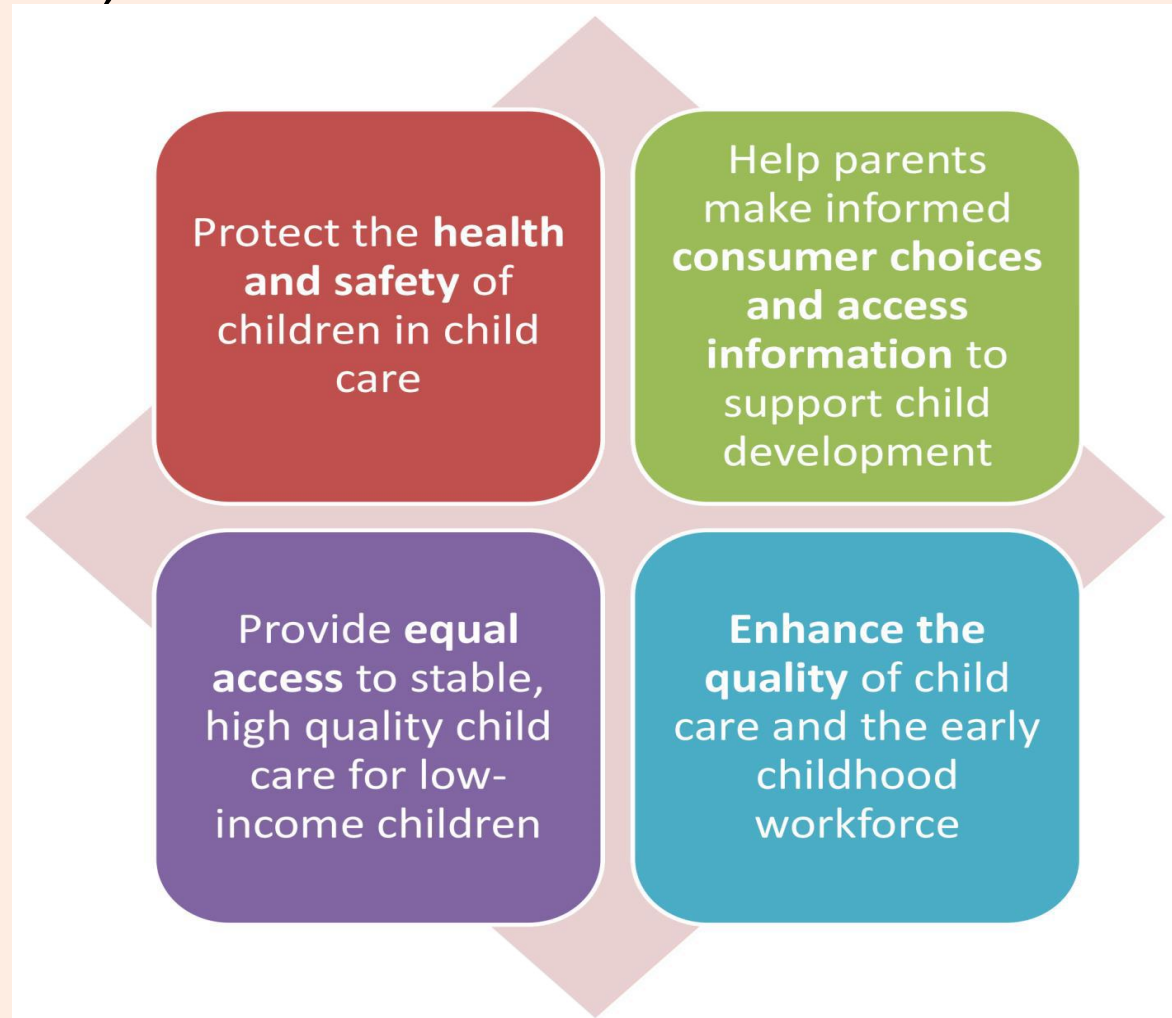
- MB 17-08: State Median Income (Initial Certification)
- MB 17-09: Graduated Phase-Out (Recertification)
- MB 17-10: Updated Income Rankings
- MB 17-11: Revised Family Fee Schedule
- MB 17-12: Enrolling Children with Exceptional Needs
- MB 17-14: 12 Month Eligibility
- MB 17-17: Revised Regional Market Rates



**TOM TORLAKSON**  
State Superintendent  
of Public Instruction

# Background

## Child Care and Development Block Grant (CCDBG) Reauthorized in 2014





**TOM TORLAKSON**  
State Superintendent  
of Public Instruction

# Early Education in California

*towards one coherent system*

## **Early Education and Support Division Vision**

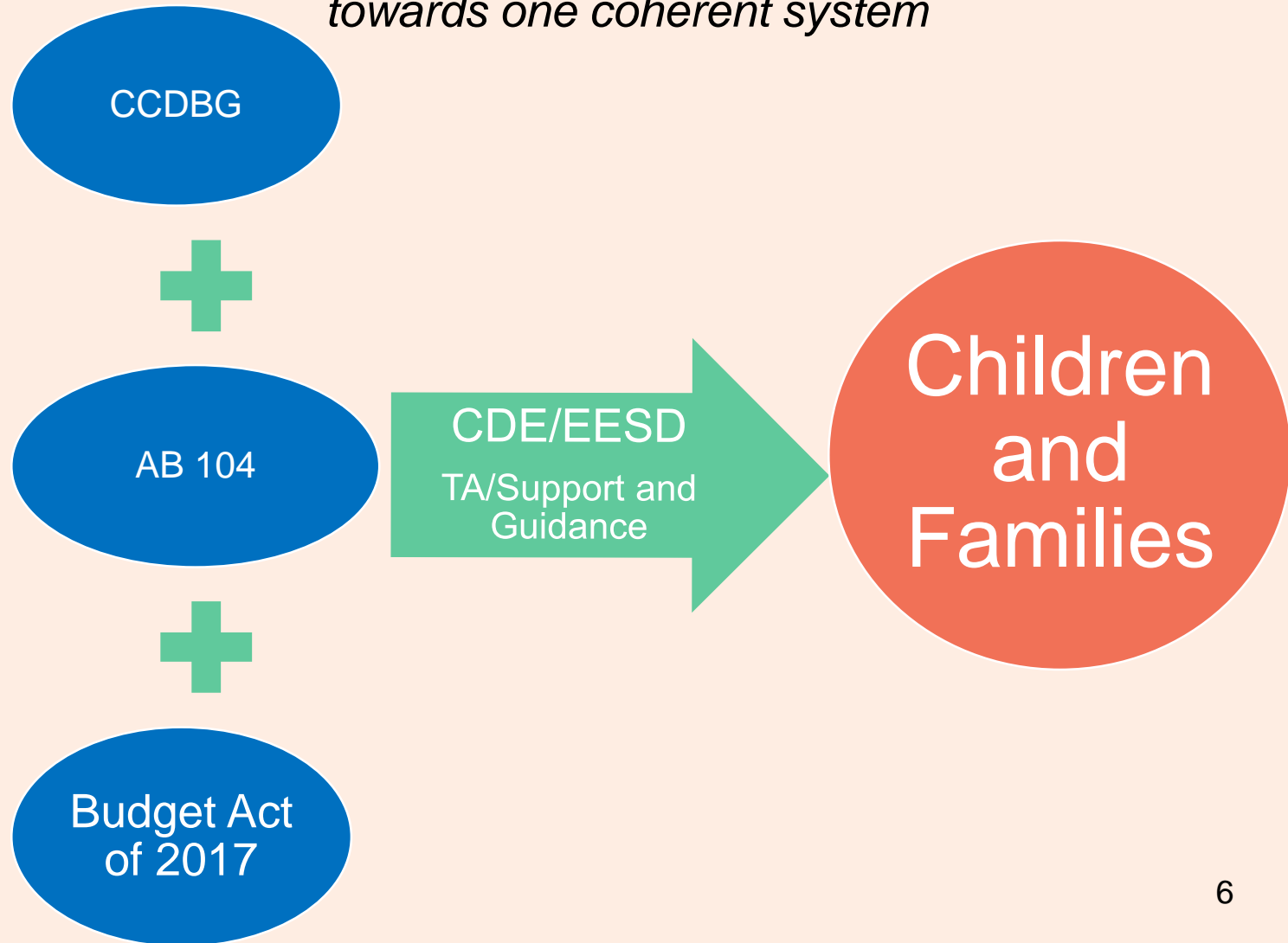
EESD envisions a coordinated and integrated statewide system for young children and their families that links all stakeholders in providing accessible, high quality, and comprehensive early education and support services.



**TOM TORLAKSON**  
State Superintendent  
of Public Instruction

# Early Education & Support Division

*towards one coherent system*





**TOM TORLAKSON**  
State Superintendent  
of Public Instruction

# MB 17-08

## Update to State Median Income (SMI)

- Winning Outcome:
  - The SMI updated to the most recent survey, increasing the income ceilings, allowing more families to be served, longer.
- What you should know:
  - This MB notified contractors of the revised income ceilings to be used to determine income eligibility for families at initial certification for subsidized child development services.



**TOM TORLAKSON**  
State Superintendent  
of Public Instruction

# MB 17-09

## Graduated Phase Out

- Winning Outcome:
  - With the increase to 85% of the SMI families are now eligible for subsidized child care services for a longer period of time.
- What you should know:
  - This MB notified contractors of the new ongoing income ceilings to be used to determine ongoing income eligibility for families at recertification for subsidized child development services.



**TOM TORLAKSON**  
State Superintendent  
of Public Instruction

# MB 17-10

## Updated Income Ceilings

- Winning Outcome:
  - The SMI updated to the most recent survey
  - Updating income ceilings that haven't changed since 2007! Allowing more families to be served.
- What you should know:
  - This MB notified contractors of the updated income ranking table that corresponds with the SMI ceilings described in MB 17-08. State Median Income (Initial Certification).



**TOM TORLAKSON**  
State Superintendent  
of Public Instruction

# MB 17-10

## Updated Income Ceilings

- **Schedule of Income Ceilings (70 percent SMI) for Initial Certification Child Care and Development Programs**

Family Size	Family Monthly Income	Family Yearly Income
1–2	\$4,030	\$48,361
3	\$4,340	\$52,076
4	\$4,877	\$58,524
5	\$5,657	\$67,888
6	\$6,438	\$77,252
7	\$6,584	\$79,008
8	\$6,730	\$80,763
9	\$6,877	\$82,519
10	\$7,023	\$84,275
11	\$7,169	\$86,031
12	\$7,316	\$87,786



**TOM TORLAKSON**  
State Superintendent  
of Public Instruction

# MB 17-11 Revised Family Fee Schedule

- Winning Outcome:
  - Changes in a family's income during the 12 month eligibility period does not result in a family fee increase until the time of recertification. With the update to the schedule, EESD has heard that for many families fees have decreased or become zero.
- What you should know:
  - This MB notified contractors of the Revised Family Fee Schedule and other changes impacting the assessment of the family fees as required by Assembly Bill (AB) 99, enacted by the Budget Act of 2017.



**TOM TORLAKSON**  
State Superintendent  
of Public Instruction

# **MB 17-12**

## **Enrolling Children with Exceptional Needs**

- **Winning Outcome:**
  - Children with exceptional needs, regardless of the family's adjusted monthly income now have more access to California State Preschool Programs (CSPP)
- **What you should know:**
  - This MB allows contractors to enroll age-eligible children with exceptional needs whose families are over the income eligibility threshold into part-day CSPPs after all otherwise eligible children have been enrolled.



**TOM TORLAKSON**  
State Superintendent  
of Public Instruction

# MB 17-14

## 12-Month Eligibility

- Winning Outcome:
  - Continuity of care for the children, less burden on the families with reporting requirements, less administrative burden for contractors
- What you should know:
  - This MB provided guidance and instruction for implementation of the new requirements in California *Education Code (EC)* Section 8263(h), referred to as “12-month eligibility” including the Implementation Guidance (Attachment A) that contains the revised *California Code of Regulations, Title 5 (5 CCR)*.



**TOM TORLAKSON**  
State Superintendent  
of Public Instruction

# MB 17-17

## Regional Market Rates

- Winning Outcome:
  - New Regional Market Rates may impact ceilings to the benefit of providers.
- What you should know:
  - This MB informs contractors operating any of the contract types listed below of revisions to the Regional Market Rate (RMR) ceilings for licensed providers beginning on January 1, 2018. This change may impact ceilings for license-exempt providers.  
(CAPP, CMAP, C2AP, C3AP, CFCC)



**TOM TORLAKSON**  
State Superintendent  
of Public Instruction

# Management Bulletins

## EESD continued work:

- Definition of Homelessness
- Emergency Child Care Bridge Program for Foster Children (Bridge Program)
- Equity Length of Time Waivers





**TOM TORLAKSON**  
State Superintendent  
of Public Instruction

# Additional Information

- All Management Bulletins can be found on the CDE website at:  
<http://www.cde.ca.gov/sp/cd/ci/allmbs.asp>
- For specific questions related to an individual Management Bulletin, please contact your Filed Services Consultant at:  
<http://www.cde.ca.gov/sp/cd/ci/assignments.asp>
- To subscribe to the email distribution list go to:  
<http://www.cde.ca.gov/sp/cd/ci/emailindex.asp>



**TOM TORLAKSON**  
State Superintendent  
of Public Instruction

